

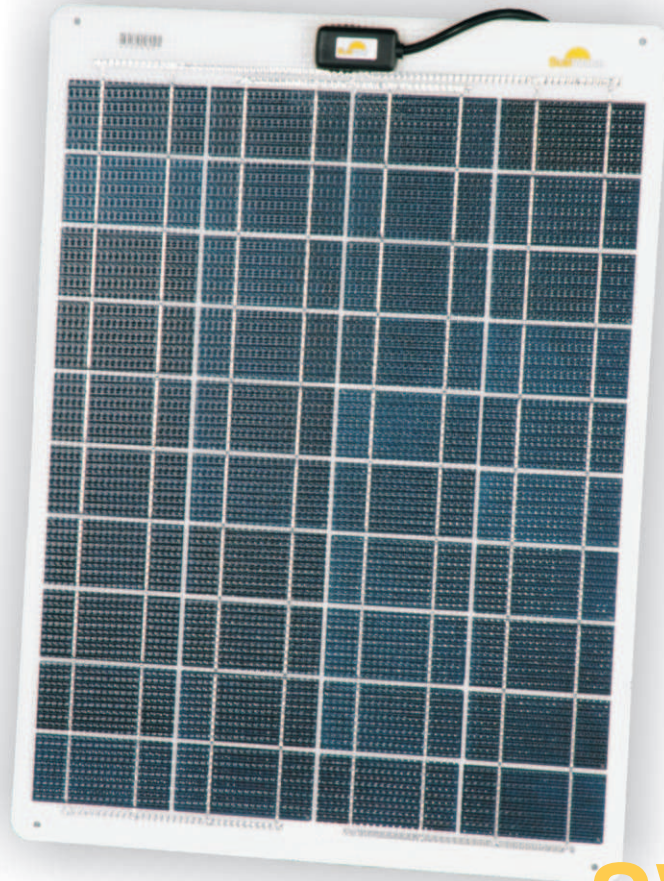
SW-3064



Type

Standard solar module 12V

state 2006



SW-3064

Product description

SunWare solar modules are designed and tested specifically for use in marine and salt water.

The modules are completely maintenance-free, durable, and weatherproof.

Even under extreme exposure to UV rays whether in the Caribbean, the Mediterranean, or the North Sea SunWare solar modules are always a reliable partner.

Their distinctive feature:

all 12V standard solar modules are designed with 40 cells. Consequently, SunWare solar modules can be fitted without rear ventilation.

Thus, any voltage drop due to high outside temperatures is compensated by the 4 additionally integrated cells to enable a full recharge of the battery.

The back of the module is completely flat so that it can be screwed or glued flush to the deck. SunWare standard solar modules should always be fitted to a firm, inflexible surface.

The modules can be fitted flat to deck surfaces with a curving of up to 3%. Due to the extremely flat module structure, the module only adds 3mm, and 15mm at the cable outlet.

The 3m PU sheathed cable is robust, UV resistant and weatherproof.

To reduce the risk of slipping in wet conditions, the module surface is slightly structured.

Within the scope of constant quality control, each individual module is tested and calibrated prior to delivery.

SW-3064



Technical features

Technical features	Value	Unit
P max	36	Wattpeak
I max	1,65	Ampère
U oc	24,6	Volt
I sc	1,8	Ampère
Qty. of cells	40	pieces
Cell size	52 x 105	mm
Laminate	ETFE/TPU/stainless steel	
Length	638	mm
Width	459	mm
Drilling	4 pieces, D=5,5	mm
Batt. System	12	Volt
Carrier plate	VA, pulver coated	
Connecting box	completely sealed	
Cabel	2 x 1,5	qmm
	red = "+", blue = "-"	
Colour	white	
Packaging indiv. packed		
Weight netto	3,1	kg
Weight brutto	4,4	kg

Technical changes reserved

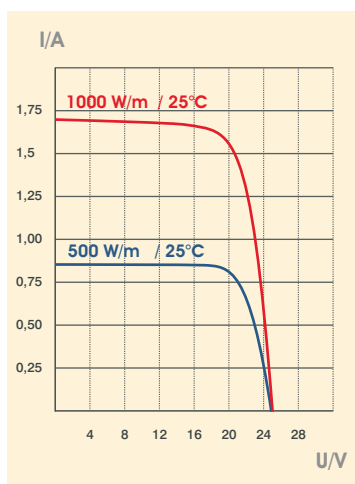
Installation

- simple installation using adhesive, screws, or the SunWare mounting clips
- modules must be installed such as to prevent vibration
- when installed to a firm, inflexible surface, the modules can be walked on with boat shoes
- modules have 3% flexibility usually sufficient for curved deck surfaces on board

Field of application



Electrical characteristic



Dimensioning

