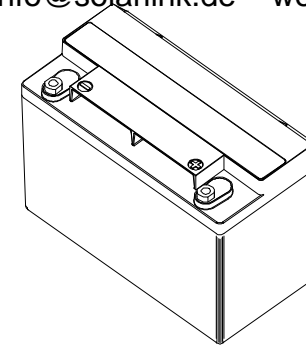
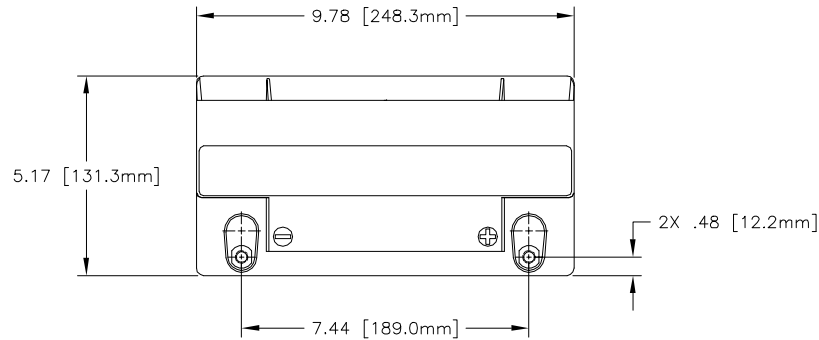


NOTES: UNLESS OTHERWISE SPECIFIED

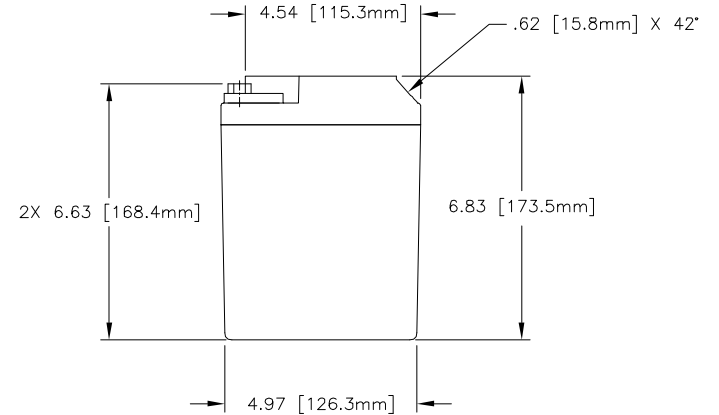
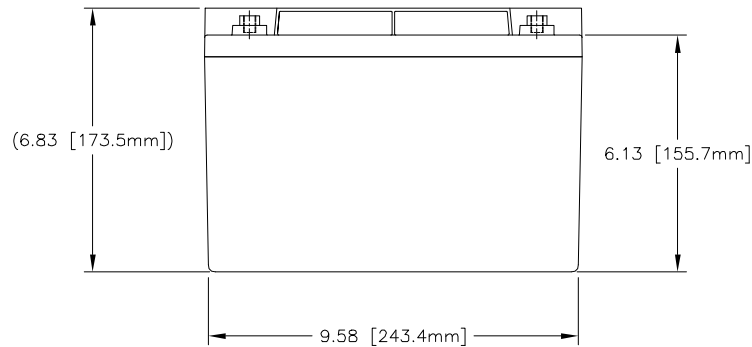
1. SEE DRAWING NO. CB-00315 AND PROCEDURE P-1000 FOR ASSEMBLY AND TEST INSTRUCTION. PROCEDURES AND ASSEMBLY DRAWINGS ARE FOR INTERNAL USE ONLY.
2. ALL TESTING ARE IAW BATTERY COUNCIL INTERNATIONAL STANDARDS.
3. ALL DIMENSIONS ARE IN INCHES [MM].

Solarlink Gmbh Drangstedter Str. 37 D 27624 Bad Bederkesa GERMANY e-mail: info@solarlink.de web: www.solarlink.de

REVISIONS			
REV	DESCRIPTION	DATE	APPROVED



REFERENCE VIEW



PART NUMBER	GPL-1400
MAXIMUM WEIGHT	32 LBS [14.5 KG]
RATED CAPACITY, C ₁	33 AH
CRANKING Amps @ 68° F	850
CRANKING Amps @ 32° F	700
CRANKING Amps @ 0° F	550
RESERVE CAPACITY	90 MIN

ENVELOPE DRAWING

QTY	REQD	CAGE CODE	PART OR IDENTIFYING NO.	NOMENCLATURE OR DESCRIPTION	MATERIAL SPECIFICATION	ITEM NO.
PARTS LIST						
UNLESS OTHERWISE SPECIFIED DIMENSIONS ARE IN INCHES TOLERANCES ARE:				CONCORDE BATTERY CORPORATION		
FRACTIONS .XX ± .06				2009 SAN BERNARDINO RD, W. COVINA, CA 91790		
DECIMALS .XXX ± .080				BATTERY, VRSLA, 12 VOLT, GPL-1400		
ANGLES				TITLE		
APPROVALS		DATE		DRAWN HRF 7/12/00		
CHECKED SV		7/13/00		TREATMENT NONE		
APPROVED JBT		7/21/00		FINISH NONE		
ISSUED DR		8/7/00		SIMILAR TO		
ACT WT		CALC WT		SCALE 1=2.5		
				DWG NO. GPL-1400		REV
				CAGE CODE 63017		SHEET 1 OF 1

ENGINEERING COPY 07AUG00